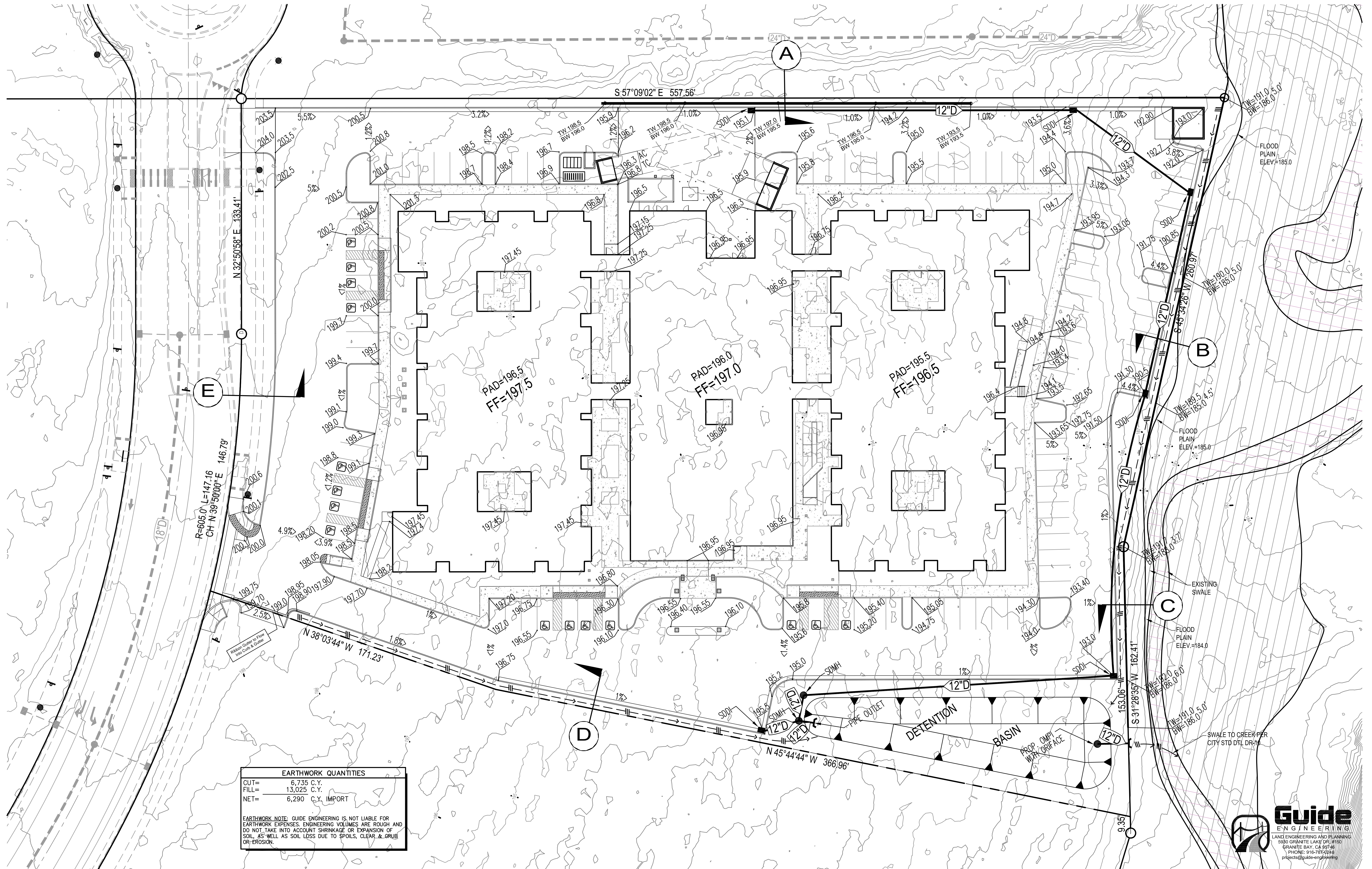
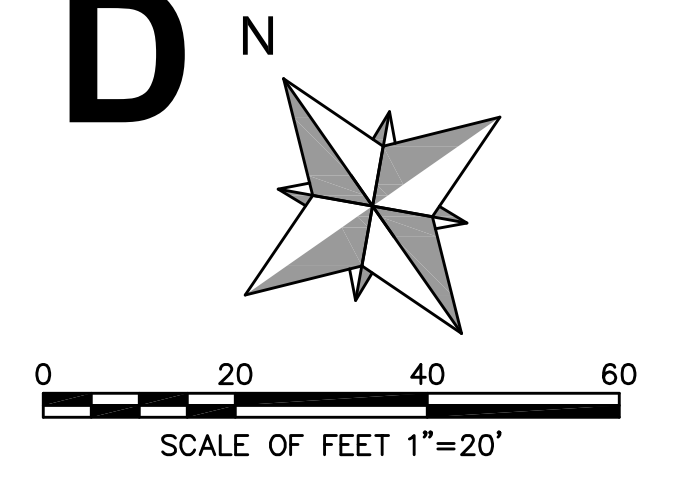


PRELIMINARY DRAWINGS  
 260 CONFERENCE CENTER DR.  
 PRELIMINARY GRADING PLAN  
 CITY OF ROSEVILLE, CALIFORNIA

DC EXHIBIT D



EARTHWORK QUANTITIES	
CUT=	6,735 C.Y.
FILL=	13,025 C.Y.
NET=	6,290 C.Y. IMPORT

EARTHWORK NOTE: GUIDE ENGINEERING IS NOT LIABLE FOR EARTHWORK EXPENSES. ENGINEERING VOLUMES ARE ROUGH AND DO NOT TAKE INTO ACCOUNT SHRINKAGE OR EXPANSION OF SOIL, AS WELL AS SOIL LOSS DUE TO SPOILS, CLEAR & GRUB OR EROSION.

# PRELIMINARY DRAWINGS

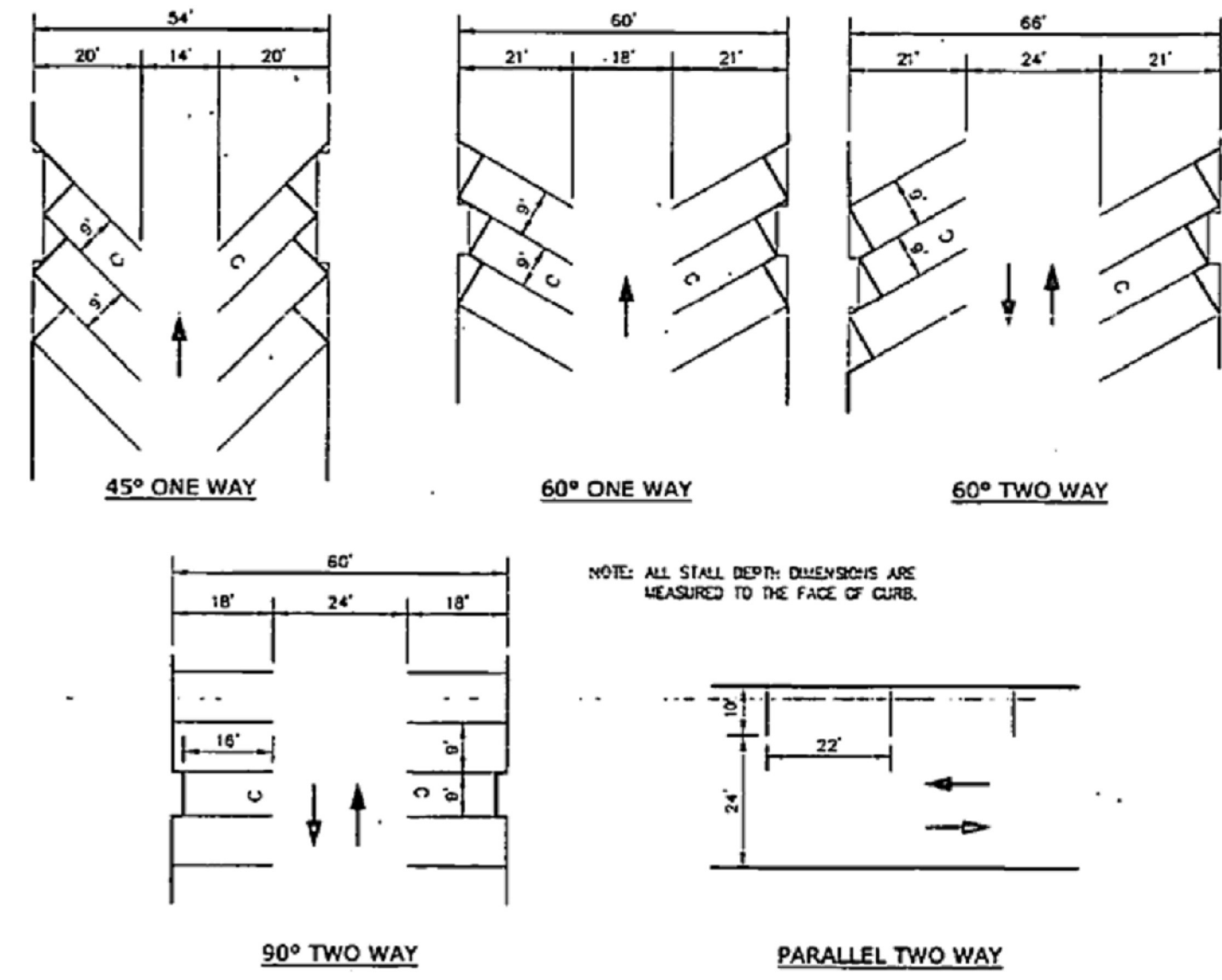
## 260 CONFERENCE CENTER DR.

### PRELIMINARY SITE PLAN

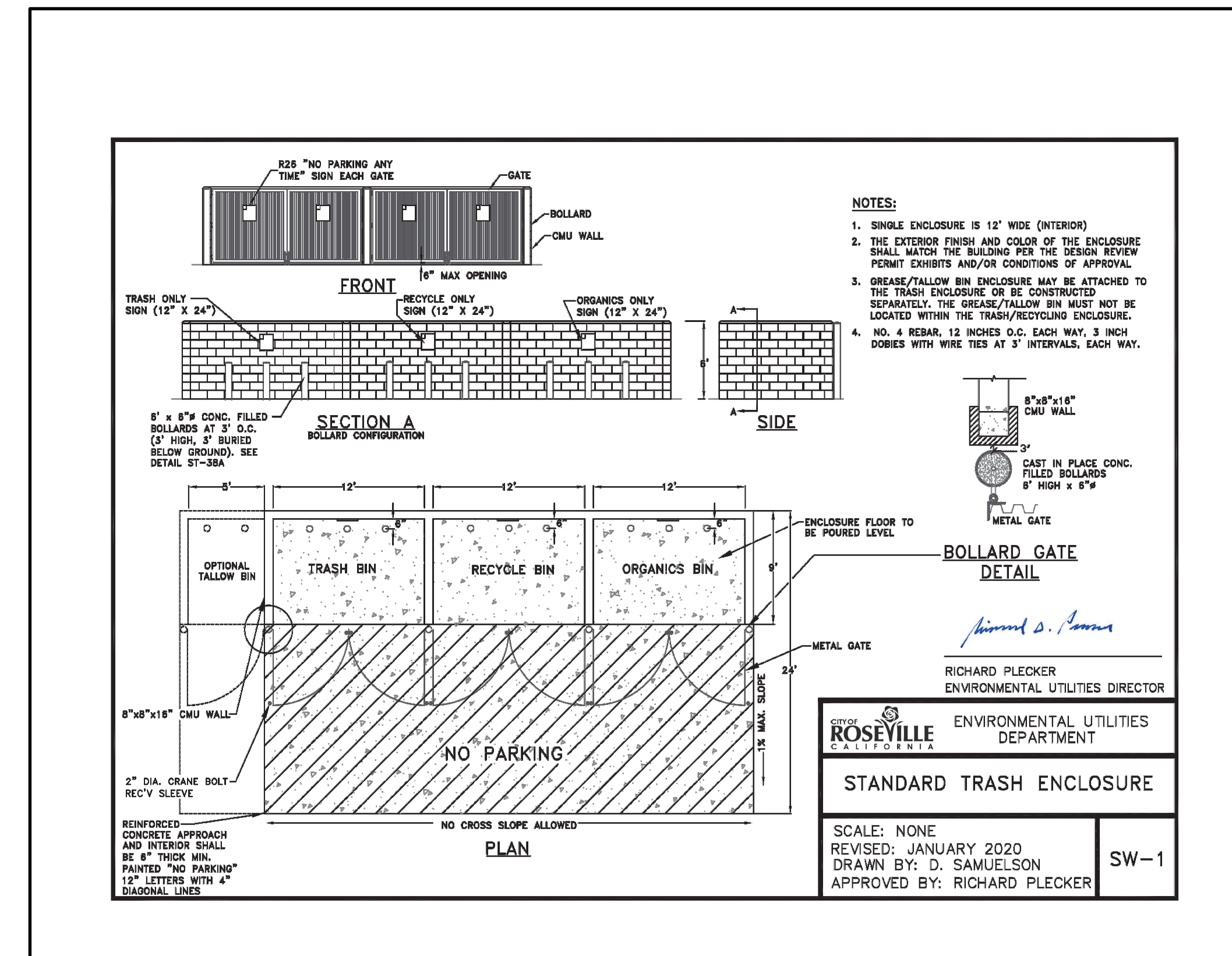
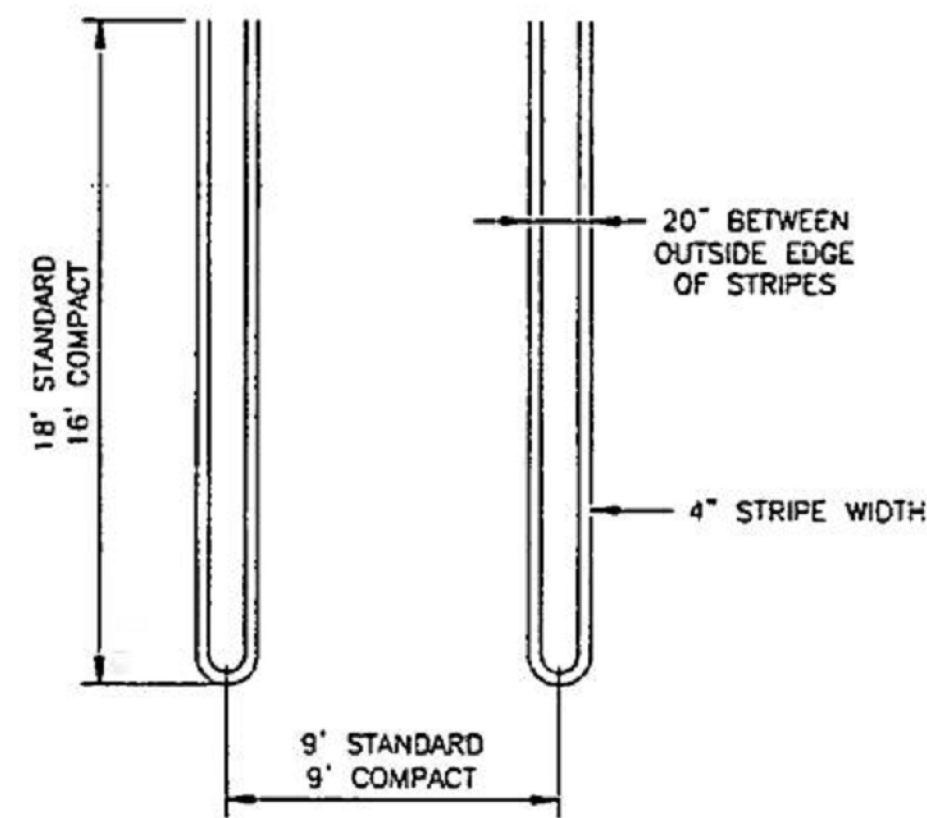
#### CITY OF ROSEVILLE, CALIFORNIA



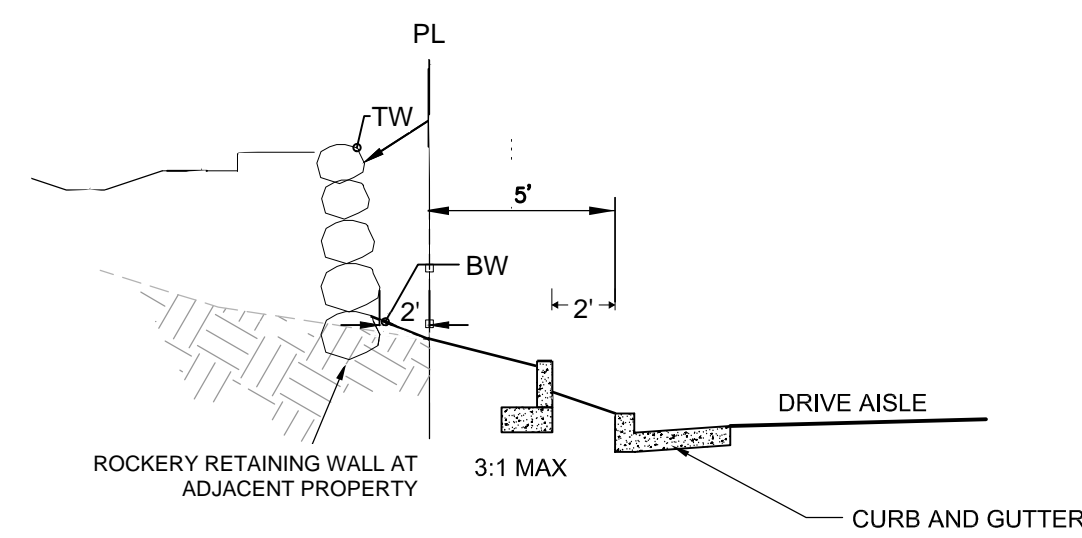
ANGLE	AISLE WIDTH
90°	24'
60°	18'
45°	14'
PARALLEL	12'



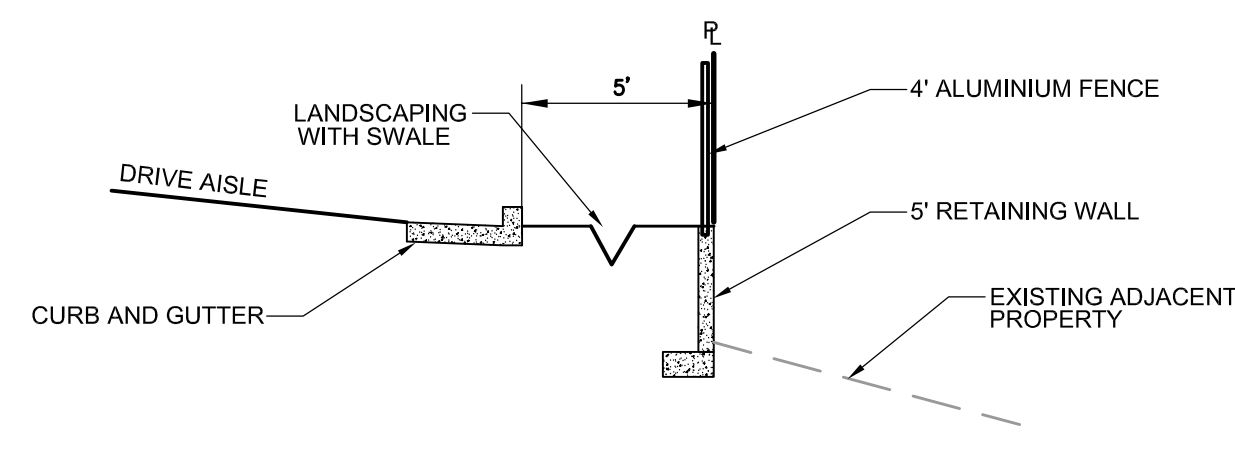
**CIRCULATION AISLE WIDTH WITH PARKING**  
NO SCALE



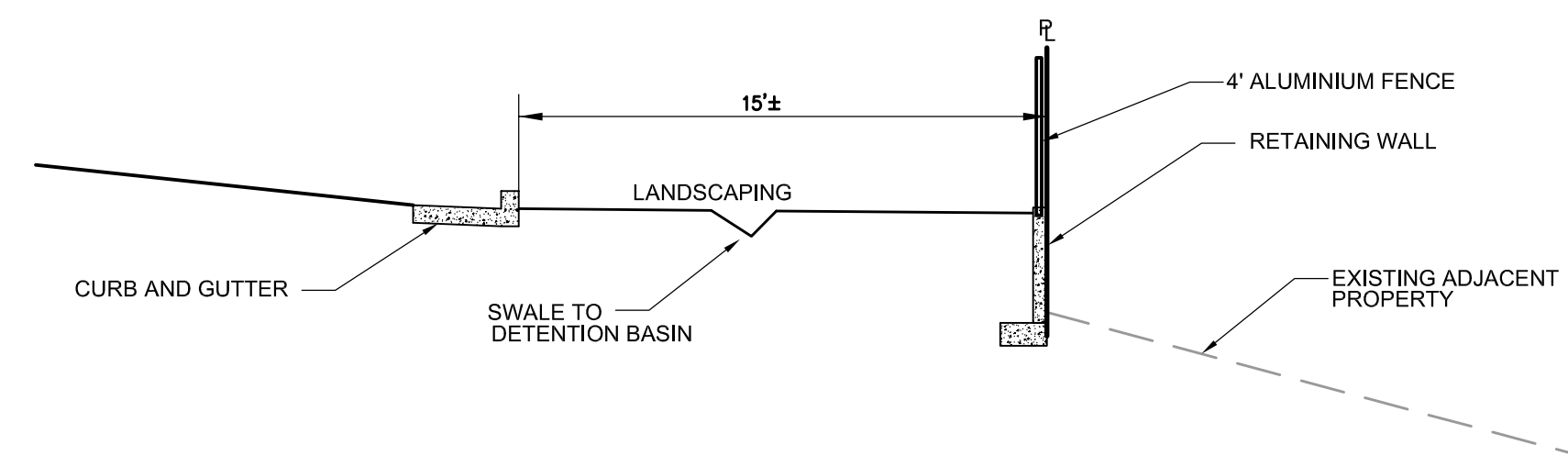
**STANDARD TRASH ENCLOSURE**  
SCALE: NONE  
REVISED: JANUARY 2020  
DRAWN BY: D. SAMUELSON  
APPROVED BY: RICHARD FLECKER  
SW-1



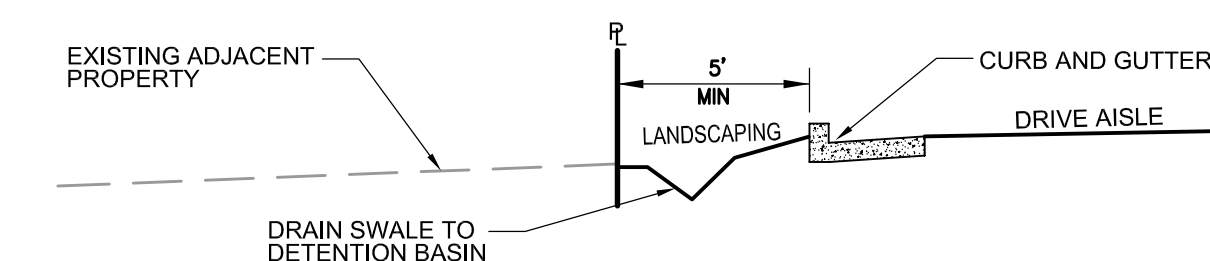
**(A) NORTH PROPERTY LINE CROSS SECTION**  
SCALE: N.T.S.



**(B) EAST PROPERTY LINE CROSS SECTION**  
SCALE: N.T.S.

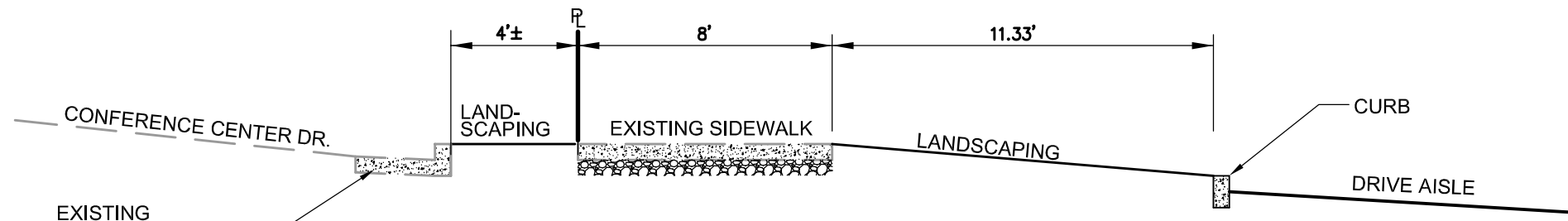


**(C) EAST PROPERTY LINE CROSS SECTION**  
SCALE: N.T.S.



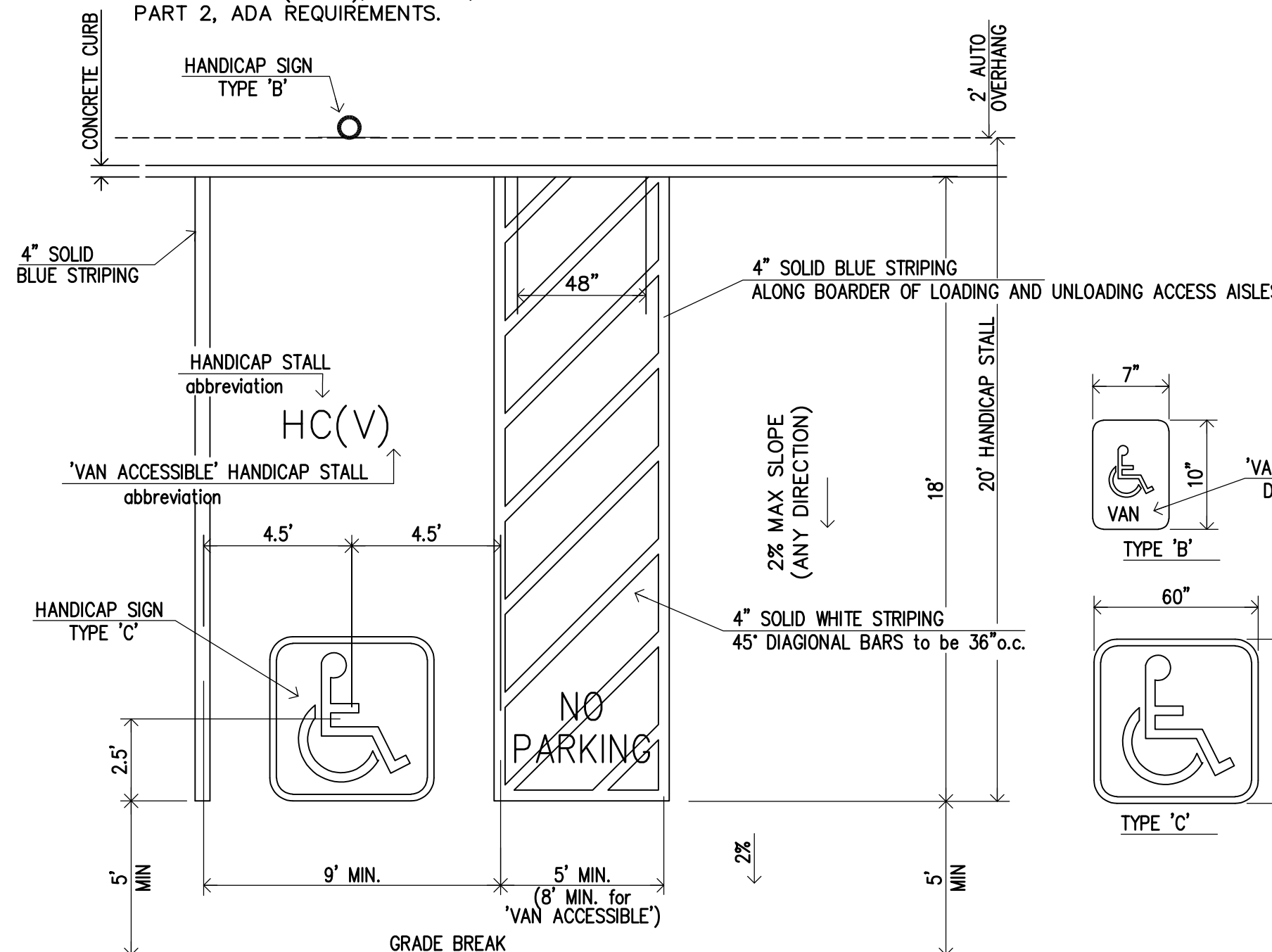
**(D) SOUTH PROPERTY LINE CROSS SECTION**  
SCALE: N.T.S.

**RIGHT OF ENTRY NOTE:**  
RIGHT OF ENTRY REQUIRED FOR ANY WORK  
ALONG THE PROPERTY BOUNDARY TYP.



**(E) WEST PROPERTY LINE CROSS SECTION**  
SCALE: N.T.S.

PLACE AN ADDITIONAL SIGN AT EACH ACCESSIBLE PARKING STALL THAT STATES "MINIMUM FINE \$250", 2020 CBC 1129B.4  
THESE DETAILS ARE FOR GENERAL GUIDELINES ONLY. ALL ACCESSIBLE PARKING STALLS AND RAMPS MUST CONFORM TO CALIFORNIA CODE OF REGULATIONS (C.C.R.), TITLE 24, PART 2, ADA REQUIREMENTS.



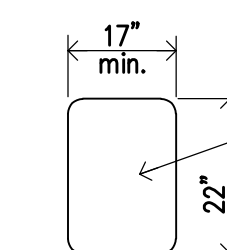
**(F) HANDICAP STALL STRIPING & SIGNING**  
- CALIFORNIA BUILDING STANDARD CODE, TITLE 24, CALIFORNIA CODE OF REGULATIONS. N.T.S.

**HANDICAP SIGNAGE NOTE:**

HANDICAP SIGNAGE TO BE INSTALLED PER CBC 1127B OR 1131B:  
SUCH SIGNAGE SHALL NOT BE BLOCKED FROM VIEW BY A VEHICLE PARKED IN THE SPACE.

**ACCESSIBLE PATH OF TRAVEL:**

- FROM EACH HANDICAPPED PARKING SPACE TO RELATED FACILITIES
- PROVIDE MINIMUM VERTICAL CLEARANCE OF 114" AT ACCESSIBLE PASSENGER LOADING ZONES AND ALONG AT LEAST ONE VEHICLE ACCESS ROUTE TO SUCH AREAS FROM SITE ENTRANCE(S) AND EXIT(S). AT PARKING SPACES COMPLYING AS "VAN ACCESSIBLE", PROVIDE A MINIMUM VERTICAL CLEARANCE OF 98" AT THE PARKING SPACE AND ALONG AT LEAST ONE VEHICLE ACCESS ROUTE TO SUCH SPACES FROM THE SITE ENTRANCE(S) AND EXIT(S).
- SEE ARCHITECTS PLANS FOR ADA SIGN TYPE PLAN
- BORDER LINES OF THE ACCESSIBLE PARKING ACCESS AISLES TO BE BLUE WITH BLUE OR WHITE HATCHED LINES AT A MAXIMUM 36" OC. 2020 CBC 1129B.3

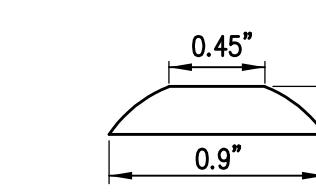


UNAUTHORIZED VEHICLES PARKED IN DESIGNATED ACCESSIBLE SPACES NOT DISPLAYING DISTINGUISHING PLACARDS OR SPECIAL LICENSE PLATES ISSUED FOR PERSONS WITH DISABILITIES WILL BE TOWED AWAY AT THE OWNER'S EXPENSE.

**TOWED VEHICLES MAY BE RECLAIMED AT (INSERT ADDRESS) OR BY TELEPHONING (INSERT PHONE NUMBER)**

**ENTRANCE SIGNAGE**  
THIS SIGN SHALL BE POSTED IN A CONSPICUOUS PLACE AT EACH ENTRANCE TO OFF-STREET PARKING.

**THIS SIGN SHALL BE POSTED IMMEDIATELY ADJACENT TO AND VISIBLE FROM EACH ACCESSIBLE PARKING STALL OR SPACE.**



**NOTE: TRUNCATED DOMES ARE NOT REQUIRED ON RAMPS ALONG ACCESSIBLE ROUTES, ONLY WHERE THE ROUTE CROSSES OR ADJOINS A VEHICULAR WAY. THE DETECTABLE WARNING SURFACE SHALL BE "SAFETY YELLOW"**

**TRUNCATED DOME IN-LINE PATTERN**

APPROXIMATELY 3/4" EXCEPT SLOPING PORTION OF RAMP

**GROOVING DETAIL**